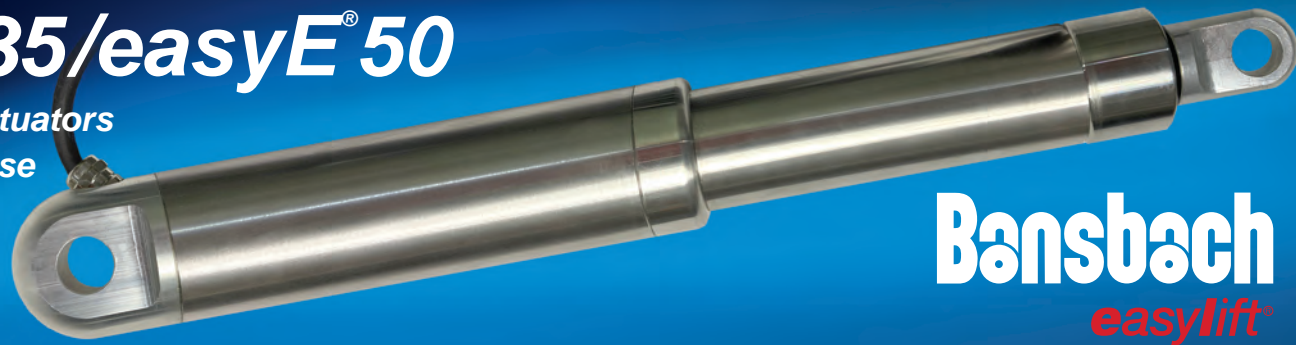


easyE[®] 35/easyE[®] 50

Electric Linear Actuators
For Underwater Use



Bansbach
easylift[®]

Specifications

The "Underwater-easyE[®]-XX" is an new extreme condition actuator. It has been tested for condition under 100-meter water pressure, submerged for a period of 1 month. Activation 10% duty cycle.

The actuator has extra-sealing, and the motor chamber is sealed for 100 bars of pressure.

- The actuator comes in stainless steel (AISI316)
- Brackets are stainless steel
- Cable is molded together with the bracket (other options also available)
- It is essential to keep the piston tube free from dirt, debris, or damage
This will damage the sealing
- Operational temperature -20°C to 70°C, low temperature might affect performance.

This product is highly customizable and changes to specification will occur.

Underwater-easyE[®]-35 24 VDC permanent magnet motor, 2.5A, the maximum load is specified at 100-meter water pressure. Higher forces regarding the actuator's capability can be expected at lower pressure.

Gear Ratio	E	F	G	H
Maximum load [N]	300	500	1300	1900
Speed at maximum load [mm/s]	12	7.5	4	3

Underwater-easyE[®]-35 12 VDC permanent magnet motor, 4A, the maximum load is specified at 100-meter water pressure. Higher forces regarding the actuator's capability can be expected at lower pressure.

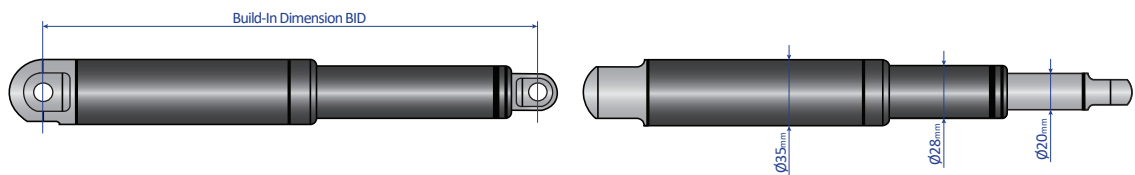
Gear Ratio	E	F	G	H
Maximum load [N]	300	500	1100	1900
Speed at maximum load [mm/s]	9	7.5	3.5	2.5

Stroke length Max stroke length are limited to 400mm

Dimensions

Axial backlash:
+/- 0.5mm

General
dimensional
variation:
+/- 1mm



Build-in Dimension "BID"

Gear Ratio	Standard	Clevis Rear	Hall/easyE [®] -i	UW easyE [®] -35/ Blue Globe
E, F	160 + stroke	+10	+10	+48 / +31
G, H	170 + stroke	+10	+10	+48 / +31

UnderWater
easyE[®] -35

Underwater-easyE[®] -50 24 VDC permanent magnet motor, 8A, the maximum load is specified at 100-meter water pressure. Higher forces regarding the actuator's capability can be expected at lower pressure.

Gear Ratio	D	E	F	G	H
Maximum load [N]	1050	1500	2400	3800	4500
Speed at maximum load [mm/s]	20	17	12	6	4

Underwater-easyE[®] -50 12 VDC permanent magnet motor, 16A, the maximum load is specified at 100-meter water pressure. Higher forces regarding the actuator's capability can be expected at lower pressure.

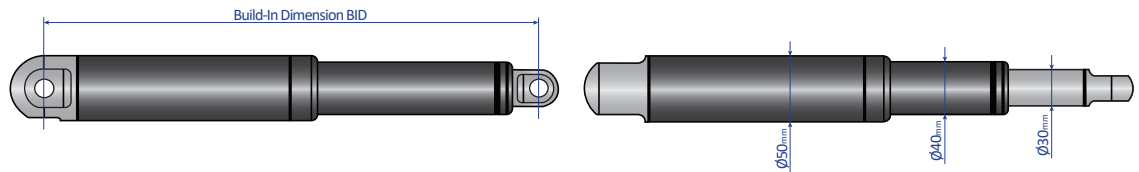
Gear Ratio	D	E	F	G	H
Maximum load [N]	750	1200	1700	3800	4500
Speed at maximum load [mm/s]	14	10	6	3	3.5

Stroke length Max stroke length are limited to 600mm

Dimensions

Axial backlash:
+/- 0.5mm

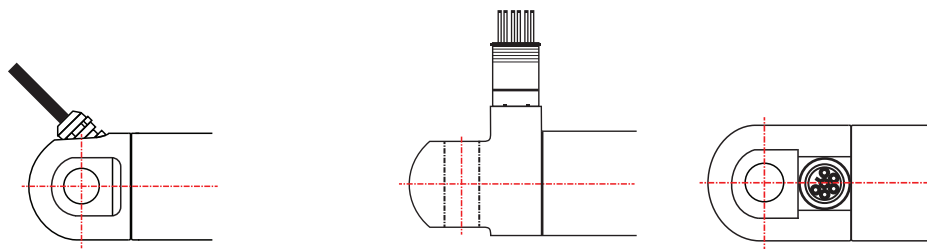
General
dimensional
variation:
+/- 1mm



Build-in Dimension "BID"			
Gear Ratio	Standard	Hall/easyE [®] -i	UW easyE [®] -50/ Blue Globe
D, E, F, G, H	240 + stroke 255 + stroke	+15 +15	+49 / +36 +49 / +36

**Wiring customizable per user request*

UnderWater easyE[®] -50



Blue Globe with cable

*UW molded connector
Mating cable sold separately*

*The IP classification covers the actuator including cable.
Connector (if mounted) or open ended is not a part of the IP classification.
The cable is molded into the rear bracket.*

Bansbach Easylift of North America, Inc.

50 West Drive
Melbourne, FL 32904

Tel: (321) 253-1999
Fax: (321) 253-5546

sales@easylift.com
www.easylift.com

Bansbach
easylift[®]